

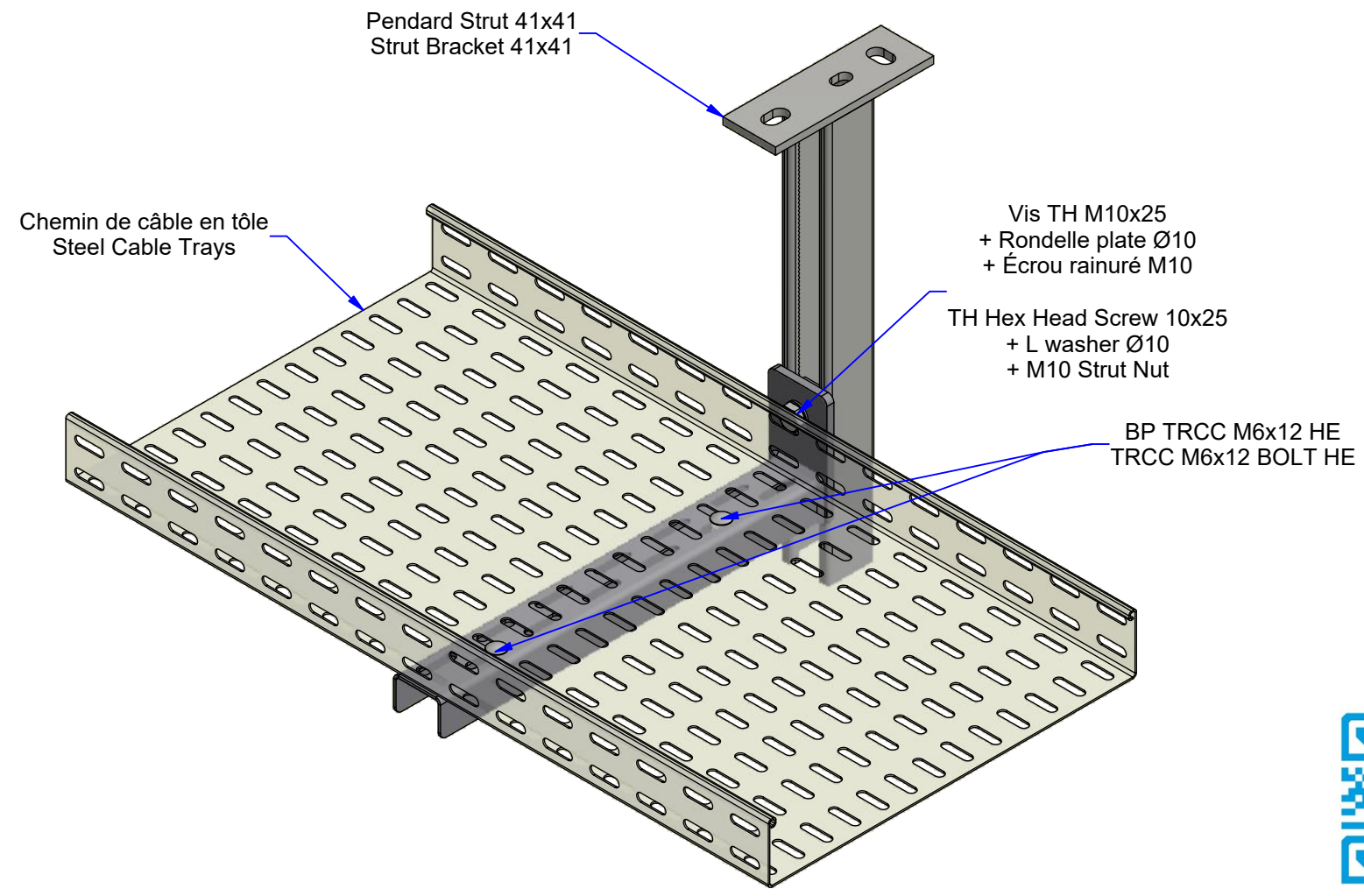
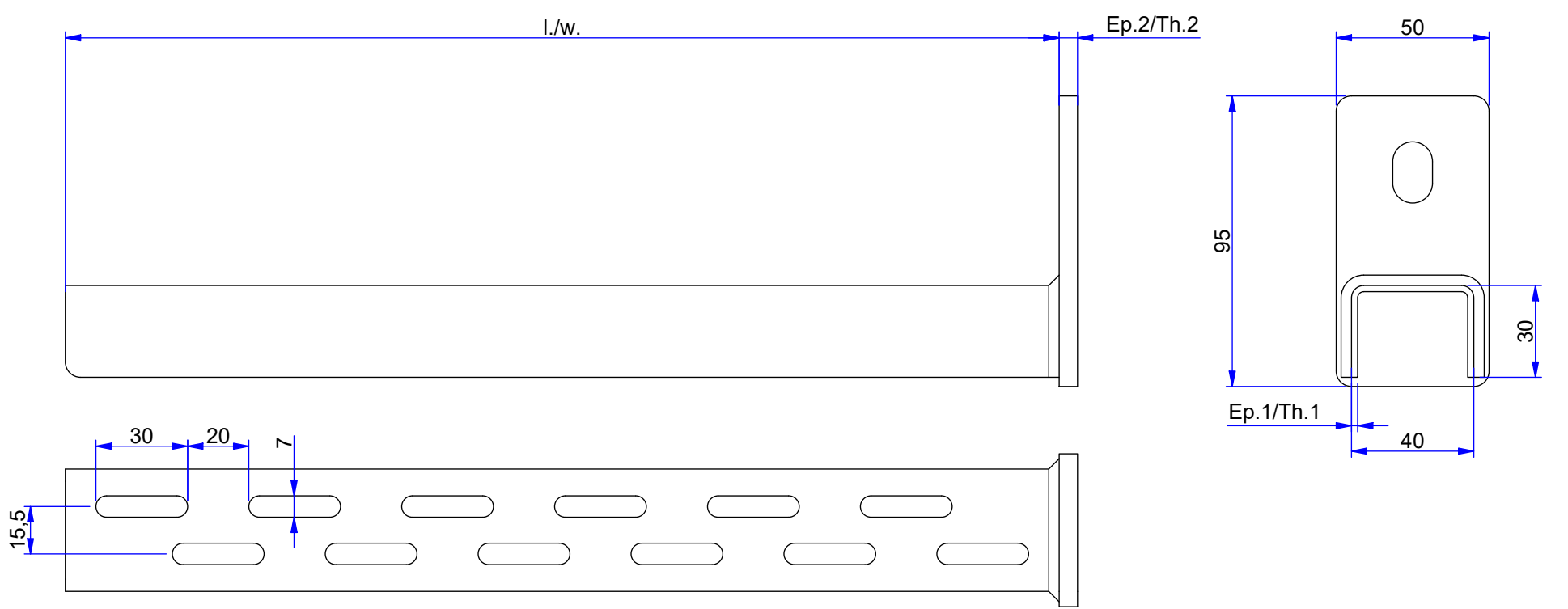
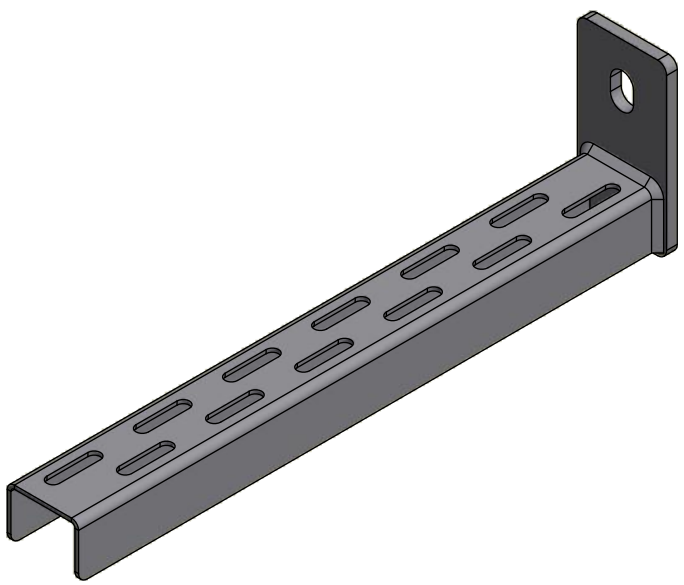
6 5 4 3 2 1


D

C

B

A





Description	Code	Masse/Weight Kg/p	Ep.1/Th.1 mm	Ep.2/Th.2 mm	l./w. mm	 daN
CONSOLE PLATE CPN 100 GC	614170	0,424	2,00	6,00	125	300
CONSOLE PLATE CPN 200 GC	614172	0,572	2,00	6,00	225	200
CONSOLE PLATE CPN 300 GC	614173	0,721	2,00	6,00	325	150
CONSOLE PLATE CPN 400 GC	614174	0,869	2,00	6,00	425	105
CONSOLE PLATE CPN 500 GC	614175	1,018	2,00	6,00	525	95
CONSOLE PLATE CPN 600 GC	614176	1,166	2,00	6,00	625	70

**GC** : Tôle d'acier galvanisé à chaud après fabrication suivant NF EN ISO 1461  
**HDG** : XC steel wire hot-dip galvanised according to NF EN ISO 1461



www.niedaxfrance.fr

CONSOLE PLATE CPN GC FLAT BRACKET CPN HDG		
ASSISTANCE TECHNIQUE +33 (0)1 55 95 92 17 pole.technique@niedax.fr		
FT03500		

6 5 4 3 2 1